



plobabob[®]

Plochingen tree bolt (Plochingen Baumbolzen)

User Manual

Drilling device with 3 arms for creating a platform substructure





Copyright © 2024 Kletterwald Plochingen GmbH

Any form of reproduction or translation, even in part, as well as the storage, processing or distribution using electronic systems, is not permitted without the written permission of Kletterwald Plochingen GmbH.

Read this user manual before installation to ensure the safe use of the Kletterwald Plochingen product.

The builder must make this user manual accessible to the installer and ensure that the installer has read and understood it.

Keep the user manual adequately protected for later use. Leave a visible note in the work area indicating the storage location.

When installing the babo[®] with the drilling device, among other things the following technical standards and accident prevention regulations must be observed:

- BGI 533 Safety when working with hand tools
- DGUV Rule 112-192 Use of eye and face protection
- BG Rule Use of protective gloves
- 3.21 Hand-held machines (Class no. 61)
- EN 61029-1:2000-05 Safety of portable motor-operated electric tools
- BGHM Occupational Safety Compact No. 011 Working with hand-held drilling machines
- EN 15567-1:2020-05 Sports and recreational facilities - Rope parks - Part 1: Construction and safety requirements



The installation of the platform bolts is carried out in accordance with the installation instructions for platform bolts 2.3

Further, the handling of the drilling device with 3 arms is described.

The following are required for the installation of the drilling device:

A threaded rod M16 or M20 with washer and nut, as well as the tool suitable for the nut.



Select a tree.

Determine the height and orientation of the platform.



Install the first platform bolt with regard to the installation instructions for platform bolts (« Rev A // 06-06-2024 ») install.

Create a stepped drilling, clean the borehole, disinfect the borehole, apply resin, screw in the platform bolt.



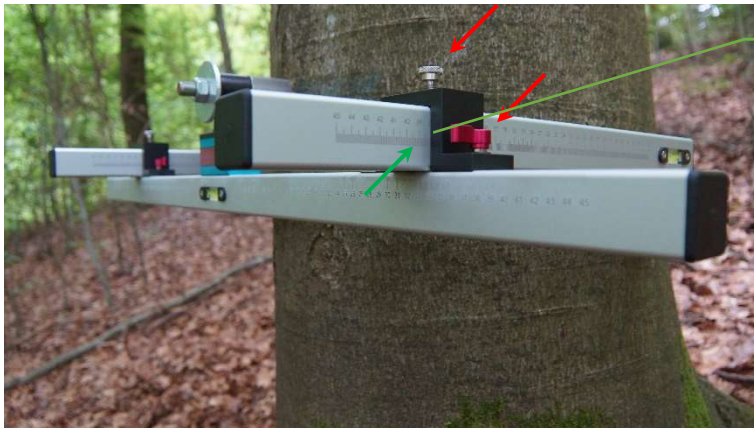


Attach the drilling device. Align using the **spirit level** and tighten with a nut and washer.

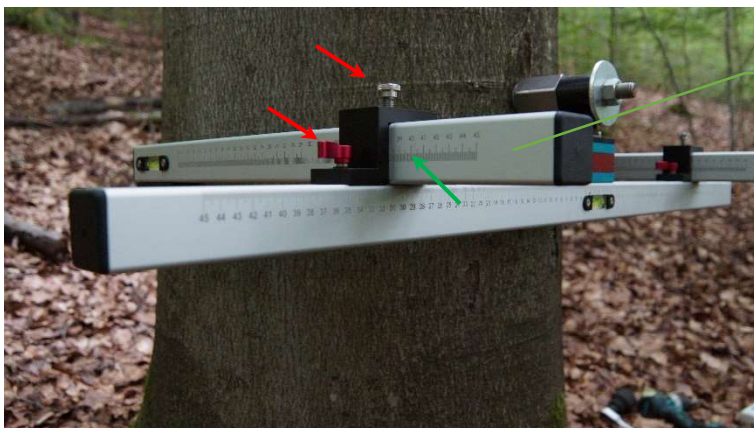
The drilling device has an axis spacing of 10 cm. Here in the picture, with **shims** 14 cm.



Loosen the clamping screws and slide the first arm to the desired position.



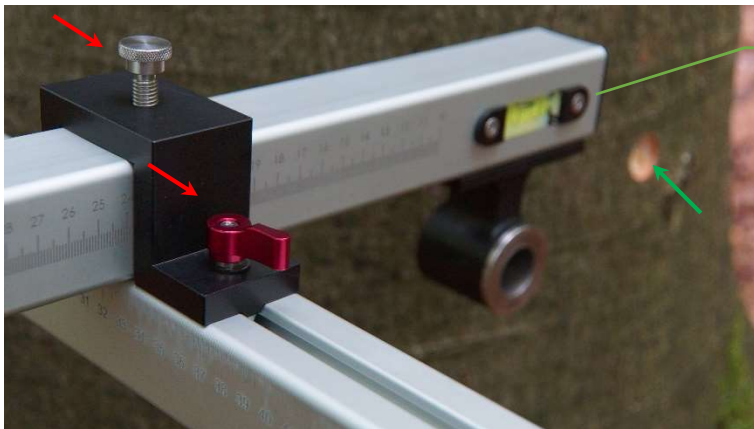
Close the clamping screws. Reading the **scale**.



Loosen the clamping screws and slide the second arm into the read position with the aid of the scale.
Close the clamping screws.



Drill the positions for platform bolts 3 and 4.
WARNING the countersink must not touch the guide sleeve!



Loosen the clamping screws and move the arms out of the **working area**.



resourceType:Wood_Tropicalwood_Greenwood_Trunk
 unk.name = Tropicalwood or Greenwood Trunk
 kMansfield and Snyder!Install the second and third platform bolts in accordance with the installation instructions for platform bolts (1.5.0 A.0)
 06-06-2024 ») einbauen.



Unscrew loosen.
 Remove the drilling device and rotate it 180°, then attach it to platform bolt 2 or 3.

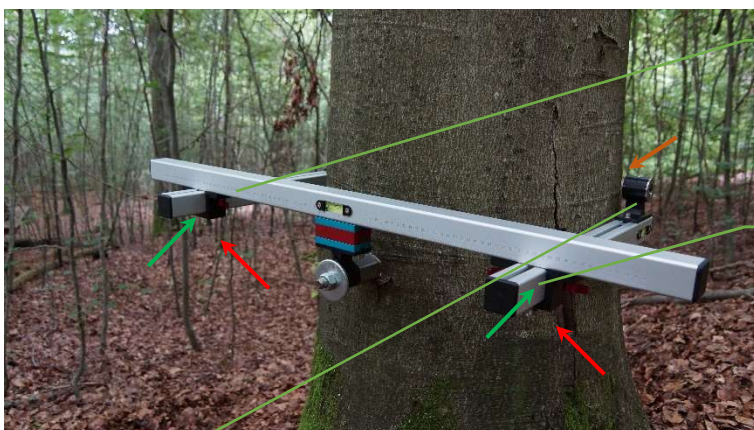


The drilling device is now in place upside down.

When fastening, pay attention to the spirit level.



Loosen the clamping screws and the drill sleeve on the Align platform bolt .



Close the clamping screws . Scaling ablesen.

Loosen the clamping screws and slide the second arm into the read position with the aid of the scaling .

Close the clamping screws .

The position of the last platform bolt is now determined.

Install the last platform bolt in accordance with the installation instructions for platform bolts (« Rev A // 06-06-2024 ») .



Depending on the thickness of the substructure timbers, it may be necessary to adjust the device's axis dimension.

The adjustment is made by inserting colored spacer plates. The blue plates have a material thickness of 10 mm, and the red plates 20 mm.

NOTES:

We thank you for your trust in our products.

We hope that you are satisfied with the information and instructions and that our drilling device facilitates your work processes. Should you require further assistance, we are available at any time.

phone +49 (0)152-34168948

mail office@babo-solutions.de

Good luck using our drilling device!