



Instructions for use

Drilling device with 4 arms for creating a platform
m substructure





Copyright © 2024 Kletterwald Plochingen GmbH

Any form of reproduction or translation, even in extracts, as well as the storage, processing or distribution using electronic systems is not permitted without the written permission of Kletterwald Plochingen GmbH.

Read these instructions for use carefully before installation to ensure the safe handling of the Kletterwald Plochingen product.

The builder must make this user manual available to the installer and ensure that the installer has read and understood it.

Keep the user manual adequately protected for future use. Leave a visible note in the work area indicating where it is stored.

When installing the babo® with the drilling device, the following technical standards and accident prevention regulations, among others, must be observed:

- BGI 533 Safety when working with hand tools
- DGUV Rule 112-192 Use of eye and face protection
- BG Rule Use of protective gloves
- 3.21 Hand-held machines (Class no. 61)
- EN 61029-1:2000-05 Safety of portable motor-operated electric tools
- BGHM Occupational Safety Compact No. 011 Working with hand-held drills
- EN 15567-1:2020-05



The installation of the platform bolts is carried out in compliance with the installation instructions for Platform Bolts 2.3« Rev A // 06-06-2024 »

The following describes the handling of the drilling device with 4 arms.

The following are required for assembling the drilling device:

A threaded rod M16 or M20 with a washer and nut, as well as the tool appropriate for the nut.



Select a tree.

Determine the height and alignment of the platform.



Install the first platform bolt taking into account the

Insert according to the installation instructions for platform bolts ("Rev A // 06-06-2024") ..

Create the step drilling hole, clean the borehole, disinfect the borehole, apply resin, and screw in the platform bolt.



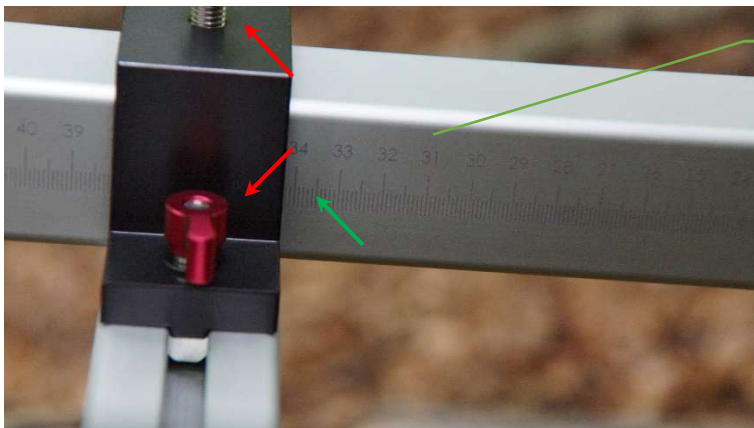


Attach the drilling device.
Align using the water level and tighten with the nut and washer.

The drilling device has an axle spacing of 10 cm. Here in the picture, with spacers 14 cm.



Loosen the clamping screws and slide the first arm to the desired position.



Tighten the clamping screws.
Read off the scale.



Loosen the clamping screws and slide the second arm to the read position with the help of the scale.

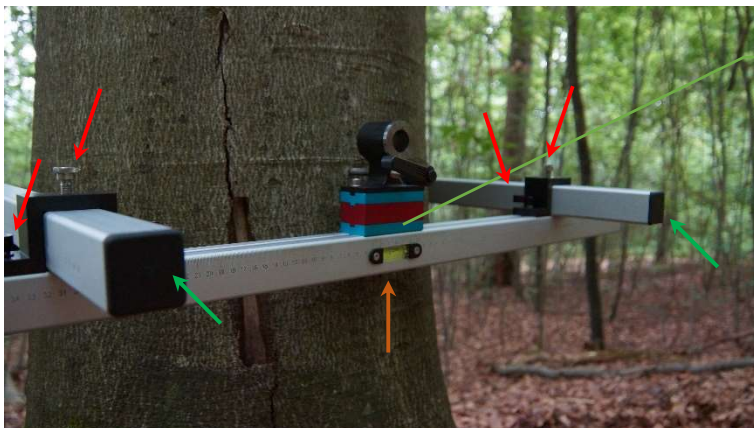
Tighten the clamping screws.



Read the position of the side arms on the **scale**.

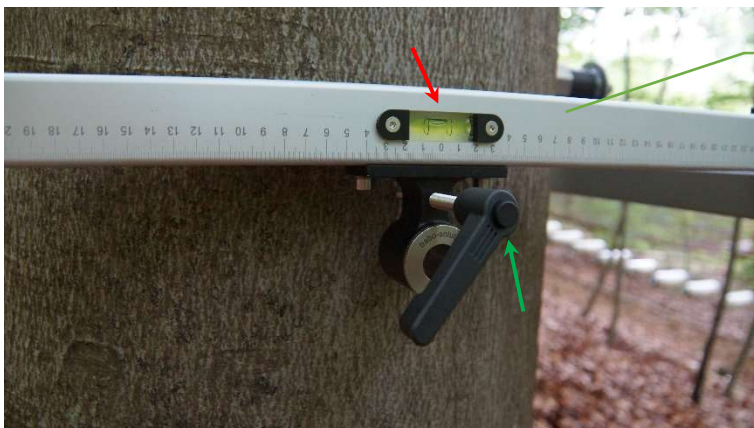


Set the arm guides to the reading of the opposite scale.

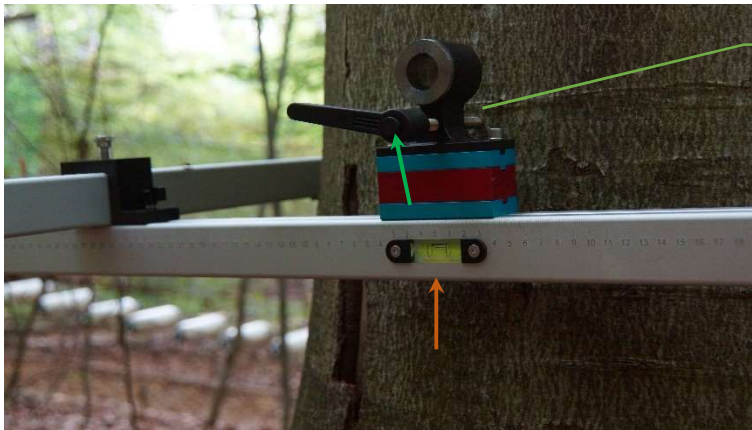


Slide the **4th arm** onto the **3rd** side arms.

Tighten all clamping screws.



Align the side arms using the spirit levels and fix them to the centering unit on the trunk.



Fix the 4th arm to the centering unit on the trunk.



The device is now fixed.

Next, drill the positions for platform bolts 2, 3, and 4.

ATTENTION the countersink must not touch the guide sleeve!



The device can now be removed.

The platform bolts 2, 3, and 4 are installed in accordance with the installation instructions for platform bolts ("Rev A // 06-06-2024").



Depending on the thickness of the underlying construction woods, it may be necessary to adjust the axial dimension of the device.

The adjustment is made by inserting colored spacer plates. The blue plates have a material thickness of 1 cm, and the red plates 2 cm.

NOTES:

We thank you for your trust in our products.

We hope that you are satisfied with the information and instructions and that our drilling device facilitates your work processes. Should you require further assistance, we are always available.

phone +49 (0)152-34168948

mail office@babo-solutions.de

Good luck using our drilling device!

« Rev A // 03-01-2024 »